



## Network Security

*Check Point network security solutions are the market-leading choice for securing the network infrastructure.*








# UTM-1 Total Security

*All-inclusive, all secured*

UTM-1™ Total Security™ appliances are all-inclusive, turnkey solutions with everything you need to secure your network in a simple, cost-effective way. Each solution includes the proven security features you need along with complete security updates, hardware warranty, and reduced support rates for up to three years. Based on the same Check Point technologies that secure the Fortune 500, UTM-1 appliances deliver uncompromising security with streamlined deployment and administration.

### KEY BENEFITS

- Everything you need to secure your network for up to three years
- Provides peace of mind with proven technologies trusted by the Fortune 500
- Protects networks, systems, and users from multiple types of attacks
- Streamlines security deployment and administration

 Industry-leading firewall	Industry-leading application- and network-layer firewall secures hundreds of applications and protocols including VoIP, instant messaging (IM), and peer-to-peer (P2P) applications
 VPN (site-to-site and remote access)	Feature-rich, easy-to-configure IPSec and SSL VPNs
 Gateway antivirus/ anti-spyware	Signature-based antivirus and anti-spyware protection
 Intrusion prevention	Intrusion prevention with SmartDefense® type-based protections and security updates
 Web security	Web security with URL filtering and integrated security for Web applications
 Messaging security*	Messaging security and anti-spam including the Check Point six dimensions of comprehensive messaging security for protecting the messaging infrastructure
 Centralized, multisite management	Centralized management via a single console for multiple sites—preinstalled on Check Point appliances

\*Standard UTM-1 appliances may be upgraded to either the one- or three-year UTM-1 Total Security models, which include messaging security.

**NGX™**

*The NGX platform delivers a unified security architecture for Check Point.*

**THE SECURITY YOU NEED**

**Proven application control and attack protection**

UTM-1 includes the most proven firewall and can examine hundreds of applications, protocols, and services out-of-the-box. Integrated SmartDefense™ IPS utilizes signature- and protocol-anomaly-based intrusion prevention to protect business-critical services like FTP, HTTP, and VoIP from known and unknown attacks. Similarly, UTM-1 Total Security can block nonbusiness applications like IM and P2P.

**Gateway antivirus, anti-spyware**

Gateway antivirus and anti-spyware are core components of UTM-1, complementing desktop endpoint security. UTM-1 Total Security uses an up-to-date list of antivirus and anti-spyware signatures and anomaly-based protection to stop viruses and other malware at the gateway. To check for threats hidden inside legitimate content, real-time antivirus scans are performed on POP3, SMTP, FTP, and HTTP services.

**Comprehensive messaging security with anti-spam**

Messaging Security from Check Point provides comprehensive protection for an organization's messaging infrastructure. The multidimensional approach protects the email infrastructure, provides highly accurate spam protection, and defends organizations from a wide variety of virus and malware threats within email.

IP reputation anti-spam	Blocks spam and malware at the connection level by checking the sender's reputation against a dynamic database of known malicious IP addresses
Content-based anti-spam	Protects against advanced forms of spam, including image-based and foreign-language spam, using pattern-based detection
Block/allow list anti-spam	Utilizes block or allow lists to deny obvious email offenders and allow trusted senders
Mail antivirus	Protects against a wide range of viruses and malware, including scans of message content and attachments
Zero-hour outbreak protection	Defends against new spam and malware outbreaks by using advanced pattern matching and distribution analysis engine
SmartDefense email IPS	Protects against a broad range of threats, including DoS and buffer overflow attacks, that target the messaging infrastructure itself

**Web filtering**

UTM-1 Total Security appliances stop inappropriate Web surfing with best-of-breed Web filtering that covers 20-million-plus URLs, so you can define an online acceptable-use policy for your organization.

**Simple site-to-site connectivity**

With UTM-1 Total Security appliances, you can simplify the setup of site-to-site VPNs and remote access. Manual setup of node-to-node VPN tunnels and security for an entire VPN is replaced by a One-Click process, where new sites and remote users are added automatically.

**Secure, flexible remote access**

UTM-1 Total Security appliances can connect employees and business partners to your trusted network through flexible IPSec or SSL-based remote access, working seamlessly with a variety of VPN agents.

**THE SIMPLICITY YOU WANT**

**All-inclusive turnkey solution**

Everything you need in a UTM network security solution is provided by UTM-1 Total Security appliances—for up to three years. This includes:

- All security protections
- All security updates
- Hardware warranty

**Integrated SmartCenter management**

UTM-1 Total Security appliances come with integrated SmartCenter™ management, offering the ability to centrally manage multiple appliances and other Check Point products from a single console. It centrally stores and distributes security policy for the entire infrastructure, eliminating the need to maintain each site and gateway separately, reducing administrative burden and errors, ensuring consistency across the network. Through the intuitive SmartDashboard, administrators define and manage elements of a security policy: firewall security, network address translation, Quality of Service (QoS), VPN agent security, and VPNs.

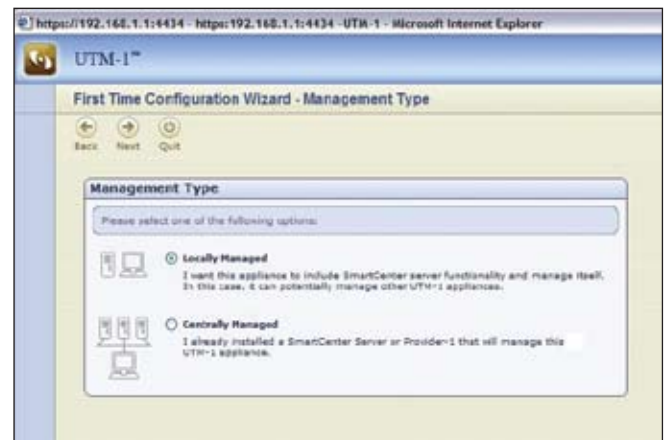
**Centralized, automatic updates**

SmartDefense Services enable you to configure UTM-1 into a preemptive security solution, capable of ensuring your networks are safe from new attacks via ongoing and automatic defense updates.

**Quick setup**

UTM-1 Total Security appliances can be easily set up with the first-time configuration wizard. This truly simple deployment process is as easy as:

- Plugging in and turning on the appliance
- Following the onscreen wizard
- Launching the SmartCenter management interface



The first-time configuration wizard makes configuring UTM-1 Total Security appliances easy.

## SUPPORT OPTIONS

Check Point offers many technical support options for customers. These range from the Standard support plan that provides telephone assistance during normal business hours with next-day shipment of replacement appliances, to the Premium support plan providing 24/7 assistance with same-day replacement shipment, up to the Premium+4H plan that provides a qualified engineer on-site within four hours to solve any appliance-related issues. For more information on these or other service and support offerings available in your geography, please contact your Check Point representative or visit the Support section of the Check Point Web site.

## UTM-1 TOTAL SECURITY SPECIFICATIONS

	Protection Details
<b>Firewall</b>	
Protocol/application support	200-plus
VoIP protection	SIP, H.323, MGCP, and SCCP with NAT support
Instant messaging control	MSN, Yahoo, ICQ, and Skype
Peer-to-peer blocking	Kazaa, Gnutella, BitTorrent
Network address translation	Static/hidden NAT support with manual and automatic rules
<b>IPSec VPN</b>	
Encryption support	AES 128-256 bit, 3DES 56-168 bit
Authentication methods	Password, RADIUS, TACACS, X.509, SecurID
Certificate authority	Integrated certificate authority (X.509)
VPN communities	Automatically sets up site-to-site connections as objects are created
Topology support	Star and mesh
Route-based VPN	Utilizes virtual tunnel interfaces; numbered/unnumbered interfaces
VPN agent support	Complete endpoint security with VPN, desktop firewall
<b>SSL VPN</b>	
SSL-based remote access	Fully integrated SSL VPN gateway provides on-demand SSL-based access
SSL-based endpoint scanning	Scans endpoint for compliance/malware prior to admission to the network
<b>Intrusion prevention</b>	
Network-layer protection	Blocks attacks such as DoS, port scanning, IP/ICMP/TCP-related
Application-layer protection	Blocks attacks such as DNS cache poisoning, FTP bounce, improper commands
Detection methods	Signature-based and protocol anomaly
<b>Antivirus/anti-spyware</b>	
Antivirus protection	Protects HTTP, FTP, POP3, and SMTP protocols
Anti-spyware blocks	Pattern-based spyware blocking at the gateway
Updates	Centralized, daily updates
<b>Web filtering</b>	
URL database	20 million-plus URLs covering 3 billion-plus Web pages
Language support	More than 70 languages spanning 200 countries
Updates	Centralized, daily updates (100,000-plus new sites a week)
<b>Messaging security</b>	
Email IPS	SMTP, POP3, and IMAP attack protection
Pattern-based anti-spam	Detects spam based on dynamic database of signatures
IP reputation checking	Blocks spam and malware by sender
Signature-based antivirus	First layer of protection from viruses and malware
Zero-hour outbreak protection	Complements signature-based protection to block new outbreaks
Block/allow lists	Provides granular control over specific domains and users
<b>Management and reporting</b>	
Centralized management	Includes centralized management
Monitoring/logging	SmartView Tracker™ provides advanced monitoring and logging
Reporting	Express reports
Command line interface	Telnet, SSH
<b>Networking</b>	
DHCP support	SecurePlatform™ DHCP server and relay
ISP redundancy	Protocol-based, source/destination and port route decisions
Routing support	OSPF, BGP, RIP v1/2, Multicast
Layer-2 bridge support	Transparently integrates into existing network
<b>Performance and availability</b>	
High availability	Active/passive and active/active failover options
Load balancing	ClusterXL® provides near linear scaling
Quality of Service	Floodgate-1® provides granular QoS control
ISP redundancy	Automatically reroutes traffic to second interface

## UTM-1 TOTAL SECURITY APPLIANCE SPECIFICATIONS

	UTM-1 270	UTM-1 450	UTM-1 570	UTM-1 1050	UTM-1 2050	UTM-1 3070
Software edition	NGX R65	NGX R65	NGX R65	NGX R65	NGX R65	NGX R65
10/100 ports	—	—	—	4	4	N/A
10/100/1000 ports	4	4	4	4	4	10
Firewall throughput	400 Mbps	400 Mbps	1.1 Gbps	1.2 Gbps	2.4 Gbps	4.5 Gbps
VPN throughput	100 Mbps	200 Mbps	250 Mbps	220 Mbps	380 Mbps	1.1 Gbps
Concurrent sessions	400,000	700,000	500,000	800,000	1.1 million	1.1 million
Users supported	Unlimited	Unlimited	Unlimited	Unlimited	Unlimited	Unlimited
VLANs	256	256	256	256	256	256
Storage	160 Gb	80 Gb	160 Gb	80 Gb	80 Gb	160 Gb
Enclosure	1U	1U	1U	1U	1U	1U
Dimensions (standard)	16.8 x 10 x 1.73 in.	16.77 x 14.31 x 1.71 in.	16.8 x 10 x 1.73 in.	16.77 x 17 x 1.71 in.	16.77 x 17 x 1.71 in.	17.4 x 15 x 1.73 in.
Dimensions (metric)	429 x 255 x 44mm	426 x 365 x 43.5mm	429 x 255 x 44mm	426 x 431.8 x 43.5mm	426 x 426 x 431.8mm	443 x 381 x 44mm
Weight	3.7kg (8.1lbs)	5.0kg (11lbs)	3.7kg (8.1lbs)	7.4kg (16.3lbs)	7.4kg (16.3lbs)	6.5kg (14.3lbs)
Operating environment	Temperature: 5° to 40° C, Humidity: 10%-85% non-condensing, Altitude: 2,500m					
Power input	100~240V, 50~60Hz	100~240V, 50~60Hz	100~240V, 50~60Hz	100~240V, 50~60Hz	100~240V, 50~60Hz	100~240V, 50~60Hz
Power consumption	65W (max.)	81W (max.)	65W (max.)	186W (max.)	188W (max.)	250W (max.)
Compliance	UL 60950; FCC Part 15, Subpart B, Class A; EN 55024; EN 55022; VCCI V-3; AS/NZS 3548:1995; CNS 13438 Class A (test passed; country approval pending); KN22, KN61000-4 Series, TTA; IC-950; ROHS					

Note: All UTM-1 models come with a 3-year hardware warranty.

### CONTACT CHECK POINT

#### Worldwide Headquarters

5 Ha'Solelim Street, Tel Aviv 67897, Israel | Tel: 972-3-753-4555 | Fax: 972-3-624-1100 | Email: info@checkpoint.com

#### U.S. Headquarters

800 Bridge Parkway, Redwood City, CA 94065 | Tel: 800-429-4391; 650-628-2000 | Fax: 650-654-4233 | www.checkpoint.com

©2003–2008 Check Point Software Technologies Ltd. All rights reserved. Check Point, AlertAdvisor, Application Intelligence, Check Point Endpoint Security, Check Point Endpoint Security On Demand, Check Point Express, Check Point Express Cl, the Check Point logo, ClusterXL, Confidence Indexing, ConnectControl, Connectra, Connectra Accelerator Card, Cooperative Enforcement, Cooperative Security Alliance, CoreXL, CoSa, DefenseNet, Dynamic Shielding Architecture, Eventia, Eventia Analyzer, Eventia Reporter, Eventia Suite, FireWall-1, FireWall-1 GX, FireWall-1 SecureServer, FloodGate-1, Hacker ID, Hybrid Detection Engine, IMsecure, INSPECT, INSPECT XL, Integrity, Integrity Clientless Security, Integrity SecureClient, InterSpect, IPS-1, IQ Engine, MailSafe, NG, NGX, Open Security Extension, OPSEC, OSFirewall, Pointsec, Pointsec Mobile, Pointsec PC, Pointsec Protector, Policy Lifecycle Management, Provider-1, PureAdvantage, PURE Security, the puresecurity logo, Safe@Home, Safe@Office, SecureClient, SecureClient Mobile, SecureKnowledge, SecurePlatform, SecurePlatform Pro, SecuRemote, SecureServer, SecureUpdate, SecureXL, SecureXL Turbocard, Security Management Portal, Sentivist, SiteManager-1, SmartCenter, SmartCenter Express, SmartCenter Power, SmartCenter Pro, SmartCenter UTM, SmartConsole, SmartDashboard, SmartDefense, SmartDefense Advisor, Smarter Security, SmartLSM, SmartMap, SmartPortal, SmartUpdate, SmartView, SmartView Monitor, SmartView Reporter, SmartView Status, SmartViewTracker, SMP, SMP On-Demand, SofaWare, SSL Network Extender, Stateful Clustering, TrueVector, Turbocard, UAM, UserAuthority, User-to-Address Mapping, UTM-1, UTM-1 Edge, UTM-1 Edge Industrial, UTM-1 Total Security, VPN-1, VPN-1 Accelerator Card, VPN-1 Edge, VPN-1 Express, VPN-1 Express Cl, VPN-1 Power, VPN-1 Power Multi-core, VPN-1 Power VSX, VPN-1 Pro, VPN-1 SecureClient, VPN-1 SecuRemote, VPN-1 SecureServer, VPN-1 UTM, VPN-1 UTM Edge, VPN-1 VSX, Web Intelligence, ZoneAlarm, ZoneAlarm Anti-Spyware, ZoneAlarm Antivirus, ZoneAlarm ForceField, ZoneAlarm Internet Security Suite, ZoneAlarm Pro, ZoneAlarm Secure Wireless Router, Zone Labs, and the Zone Labs logo are trademarks or registered trademarks of Check Point Software Technologies Ltd. or its affiliates. ZoneAlarm is a Check Point Software Technologies, Inc. Company. All other product names mentioned herein are trademarks or registered trademarks of their respective owners. The products described in this document are protected by U.S. Patent No. 5,606,668, 5,835,726, 5,987,611, 6,496,935, 6,873,988, 6,850,943, and 7,165,076 and may be protected by other U.S. Patents, foreign patents, or pending applications.