



FireWall-1

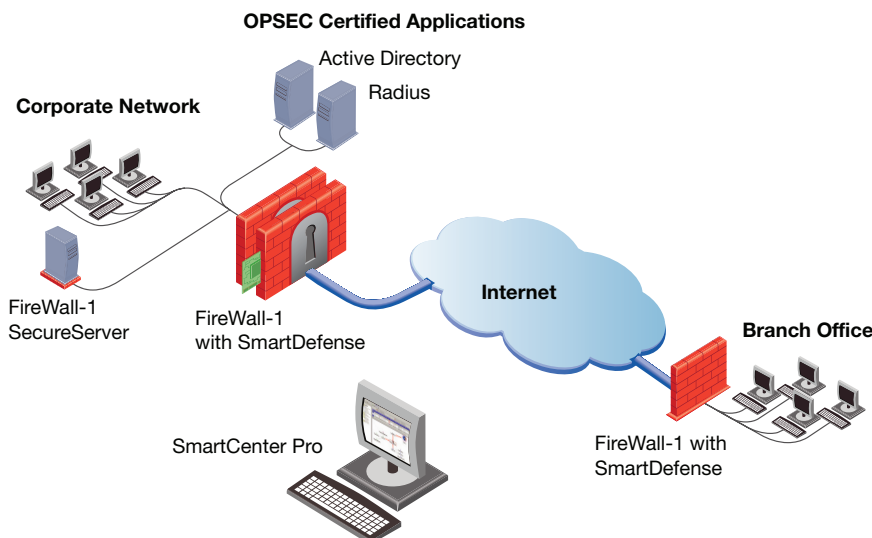
The industry's most proven perimeter security

YOUR CHALLENGE

Internet technology has led many companies to redefine the way they communicate with customers, work with partners, and sell products. As your company embraces the Internet to forge new business models, Internet security and network reliability become increasingly important. To maintain the trust of partners and customers, you must ensure that critical data, applications, servers, and networks are secure from increasingly sophisticated Internet-based attacks.

OUR SOLUTION

Check Point FireWall-1® is the only security gateway solution that delivers comprehensive attack protection for both application and network security. Using INSPECT™ and Application Intelligence™, the most adaptive and intelligent inspection technologies, FireWall-1 integrates both network-level and application-level protection. As the industry's leading Internet security solution, Check Point FireWall-1 provides the highest level of security, with access control, attack protection, application security, intrusion prevention, content security, authentication, Quality of Service (QoS), and Network Address Translation (NAT). FireWall-1 leverages SMART Management, enabling you to intelligently manage security infrastructure with maximum efficiency. In addition, complementary Open Platform for Security (OPSEC™) certified products provide an unparalleled breadth of options for extending protection with best-of-breed third-party applications.



FireWall-1 and FireWall-1 SecureServer provide true enterprise protection that is extensible with OPSEC certified solutions.



The NGX platform delivers a unified security architecture for Check Point perimeter, internal, and Web security.

PRODUCT DESCRIPTION

FireWall-1® is the only security gateway solution that delivers comprehensive attack protection and network security.

PRODUCT FEATURES

- Attack protection with Application Intelligence™
- Access control based on patented Stateful Inspection
- Market-leading performance through patented SecureXL™
- SMART Management for maximum efficiency
- Intelligent VoIP security

PRODUCT BENEFITS

- Defeats attacks against business applications
- Prevents unauthorized network access
- Forms flexible security infrastructure with best-of-breed solutions
- Enables multi-gigabit firewall performance

NGX HIGHLIGHTS

- Multicast traffic control
- Stronger authentication
- More granular policy control



Check Point protects every part of your network—perimeter, internal, Web—to keep your information resources safe, accessible, and easy to manage.

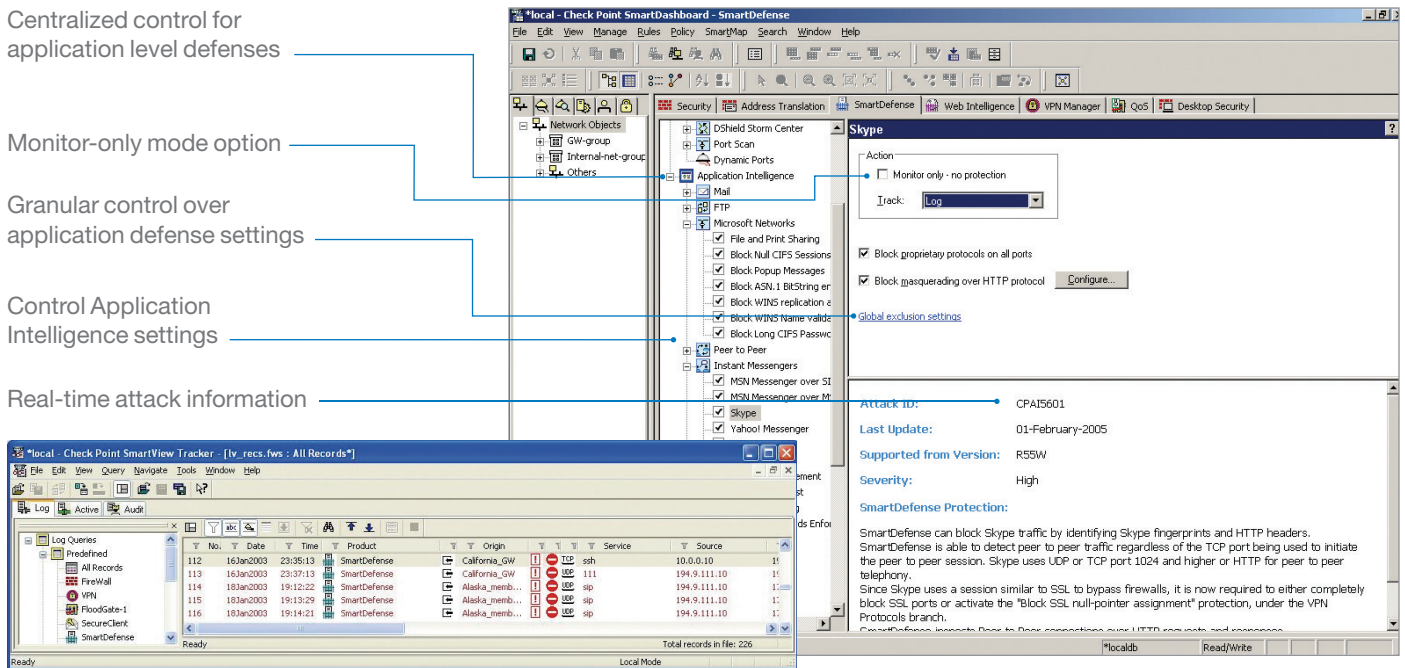
Centralized control for application level defenses

Monitor-only mode option

Granular control over application defense settings

Control Application Intelligence settings

Real-time attack information



Using intelligent security technology, SmartDefense actively protects organizations from all known and most unknown network attacks.

UNPARALLELED PROTECTION

FireWall-1 secures 100 percent of the global Fortune 100 and over 97 percent of the global Fortune 500. Only Check Point, inventor of Stateful Inspection and Application Intelligence, provides true Stateful Inspection and advanced application security capabilities to track the state and context of all communications for truly complete network protection.

Broad application support

With support for more than 200 predefined applications and protocols out-of-the-box, FireWall-1 provides the broadest application support in the industry. Examples:

- Microsoft CIFS, Microsoft RPC, Microsoft SQL
- SMTP, POP3, IMAP4, FTP, HTTP v 1.0 and 1.1, DNS telnet, SSH v1 and v2 , SSLv1, v2 and v3traffic
- SOAP/XML
- Instant Messaging and Peer-to-Peer Applications
- Windows Media, RealVideo Session Initiation Protocol (SIP) , Cisco Skinny, MGCP and H.323-based services, including Voice over IP (VoIP) and NetMeeting
- Oracle SQL and ERP

FireWall-1 continues to evolve to support new business needs. As the first firewall to support Microsoft CIFS, FireWall-1 provides granular access control to file and print servers, enabling you to secure them from unauthorized usage. With FireWall-1, you can restrict who can browse or publish documents to a specific server. The first enterprise firewall to inspect SOAP/XML, and capable of terminating SSL connections, FireWall-1 eliminates the requirement to deploy a separate infrastructure to secure Web services.

Continual innovation means FireWall-1 delivers the highest level of security to your organization. FireWall-1 inspects Web applications, such as Instant Messaging and peer-to-peer applications, even when they are running on commonly used ports. You can extend Web application and CIFS security to include single sign-on with an optional UserAuthority® Module.

Protection against network and application threats

Today, centralized protection from known and new threats is increasingly important. FireWall-1 includes SmartDefense™ and Application Intelligence capabilities to protect your company against all types of network and application-level attacks. For example, SmartDefense automatically blocks and logs network-level attacks such as DoS, oversized packets, SYN floods, and fragmentation attacks. It also defends against application layer attacks such as Nimda, Code Red, SQL and LDP injection, and Cross-Site Scripting. Real-time attack information and protection updates through the online SmartDefense attack center are optional.

Secure Web applications

Web Intelligence™ is an optional advanced Web application firewall tightly integrated into VPN-1. It protects Web applications from common hacking techniques such as SQL injection, Cross-Site Scripting, command injection, LDAP injection, and directory traversal. It also includes Malicious Code Protector, a patented technology that protects buffer overflow attacks by analyzing and catching both known and unknown attacks without the aid of signatures.

Secure VoIP

FireWall-1 offers comprehensive security for VoIP applications, including Stateful Inspection of SIP, H.323, MGCP, and SCCP (Skinny). SecureXL™, ClusterXL®, and FloodGate-1® helps enterprises build a high-performance, fault-tolerant, and prioritized voice network.

Granular content security

With Application Intelligence, FireWall-1 enables you to control access to specific HTTP, SMTP, or FTP resources based on source, destination, user privilege, and time of day. FireWall-1 SmartDefense technology provides application-level inspection to protect data and application servers from malicious Java and ActiveX applets. You can add antivirus screening, URL filtering, and Java security from a broad selection of OPSEC Certified products.

Flexible authentication

Before granting access to sensitive network resources, organizations must validate user identity. With FireWall-1, numerous authentication solutions can be integrated into a security policy, including FireWall-1 and LDAP-stored passwords, token-based products, RADIUS, TACACS+, and X.509 digital certificates.

Integrated Network Address Translation

FireWall-1 provides NAT to conceal internal network addresses and support different networking scenarios integrated with Stateful Inspection technology as well as application security. FireWall-1 automatically generates static and dynamic NAT rules based on network topology information.

SMART MANAGEMENT

Check Point Security Management Architecture (SMART) solutions enable you to centrally manage and deploy a single firewall policy to an unlimited number of FireWall-1 gateways. Once a policy is created or modified, it is automatically distributed to all locations. Check Point SmartCenter™ enables enterprises to centrally define perimeter, internal, and Web security policies, correlate and prioritize security events, and perform advanced monitoring and reporting, all via a single console. This unified architecture enables easy distribution of security policy updates across all gateways, ensuring consistent policy enforcement and improving operational efficiency.

SMART user interface

SmartDashboard™, included with centralized SMART management solutions, provides a single user interface for creating and deploying policies for multiple Check Point products. This enables you to manage FireWall-1 and NAT policies as part of an overall security policy that includes VPNs, client security, and QoS management. All object definitions, including those for users, hosts, network, and services are shared among all applications for efficient policy creation and security management.

SMART status and auditing

SmartView Status™ and SmartView Tracker™ are included with centralized SMART management solutions. SmartView Status enables monitoring system status of FireWall-1 as well as other Check Point and select OPSEC products. SmartView Tracker provides real-time graphical tracking, monitoring, and accounting information for all connections logged by FireWall-1 gateways. It also logs administrator actions for quick troubleshooting of configuration errors. In addition, administrators can use SmartView Tracker to search or filter logs to quickly locate or track events.

WIRE-SPEED SECURITY

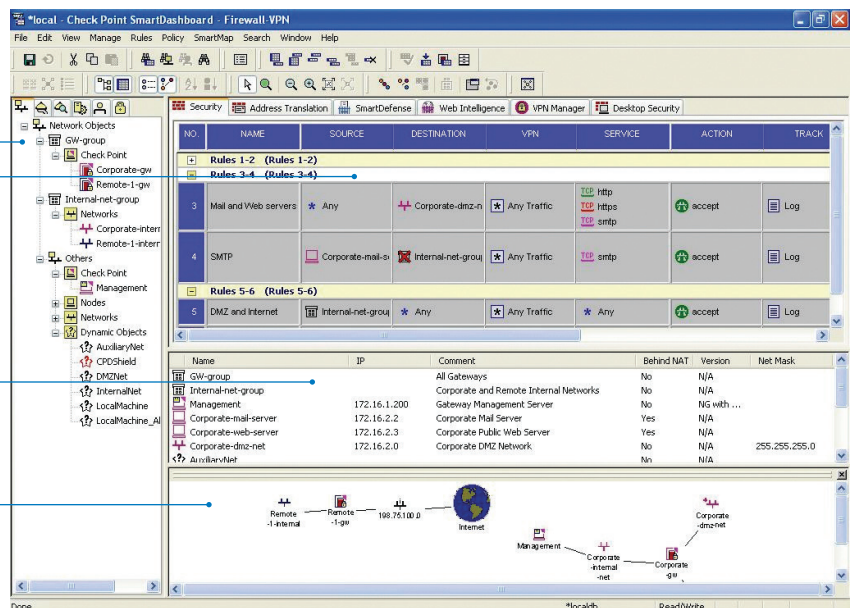
FireWall-1 delivers market-leading price/performance to offices of all sizes with patented SecureXL™ technology. SecureXL-enabled solutions are available in a variety of form factors to meet your deployment needs, including SecureXL-enabled appliances, optional firewall and VPN acceleration cards, and an optional Performance Pack software module. For environments where congestion on the Internet link is a possibility, an optional FloodGate-1® module provides flexible quality of service management. FloodGate-1, which can run on the FireWall-1 gateway, ensures optimal performance for business-critical traffic, such as VPN, database, and Web services traffic. FloodGate-1 also provides low latency queuing for additional control of VoIP and multimedia traffic.

Objects tree contains all objects—for users, hosts, networks, and more

Rule base manages firewall, NAT, QoS, desktop security and Web access policies

Objects list provides easy access to the most commonly used objects

Optional SmartMap module provides a detailed, graphical map of the security deployment



SmartDashboard simplifies security by making all necessary information readily accessible.

NON-STOP SECURITY

For those seeking advanced high availability and load sharing, ClusterXL, an optional module, distributes traffic of all types across clustered gateways. If a gateway becomes unreachable, all new and ongoing connections are seamlessly redirected to remaining cluster members. Residing on the gateways themselves, ClusterXL requires no additional hardware investment and is easily configured through SmartDashboard™.

SECURE VPN

FireWall-1 is included with Check Point's industry-leading Virtual Private Network solution, VPN-1® Pro™. With Check Point VPN-1/FireWall-1, security rules are applied to VPN traffic to guarantee complete integrity of network security. FireWall-1 installations can easily be upgraded to VPN-1.

Deployment options

Corporations can deploy FireWall-1 on Internet and internal network gateways, or deploy FireWall-1 SecureServer™ on a single host to protect an application server. FireWall-1 is supported on a broad range of platforms—meeting the price/performance requirements of any size organization:

- Turnkey “Secured by Check Point” appliances with pre-installed Check Point software
- Windows, Solaris, and Linux servers
- SecurePlatform™, included on the standard Check Point product CD, installs a customized, hardened operating system and FireWall-1 on open servers in under 10 minutes

To find a platform tailored to your Internet security needs, please visit the Check Point Platform Selection Guide at: <http://www.checkpoint.com/products/protect/platforms.html>.

SYSTEM REQUIREMENTS

ENFORCEMENT MODULE

Operating System	Windows 2003 Server (SP1-4) Windows 2000 Server (SP1-4) Windows 2000 Advanced Server (SP1-4) Sun Solaris 8 (32 or 64 bit mode) Sun Solaris 9 (64 bit mode) Red Hat Enterprise Linux 3.0 Nokia IPSO 3.9 Check Point SecurePlatform
------------------	--

Disk Space	300 MB
Memory	256 MB (Windows), 128 MB (Linux)

ADDITIONAL CAPABILITIES

FireWall-1 supports a number of other Check Point management modules, including the following:

SmartCenter™/SmartCenter Pro™ delivers centralized management for all Check Point security, VPN, and QoS offerings.

Provider-1®/SiteManager-1™ delivers centralized management for all Check Point security, VPN, and QoS offerings, as well as consolidates multiple security policies in an architecture that scales to support thousands of policies.

SmartMap™ allows security managers to validate the integrity of their security policy prior to deployment by providing a detailed, graphical map of an organization's security deployment.

SmartUpdate™ delivers centralized software and license management for Check Point products to ensure that a consistent security policy is enforced throughout the enterprise network.

SmartView Monitor™ enables powerful performance analysis by presenting graphical views of end-to-end performance metrics such as bandwidth, round-trip time, and packet loss.

Eventia Reporter™ is a complete reporting system that delivers in-depth network security activity and event information from Check Point log data.

SmartDirectory enables VPN-1/FireWall-1 gateways to integrate with one or more LDAP-compliant directory servers.

UserAuthority™ provides a secure communications layer for single sign-on to eBusiness applications.

Eventia Analyzer™ provides centralized, real-time security event correlation and management for Check Point security gateways and third-party devices.

©2003-2005 Check Point Software Technologies Ltd. All rights reserved. Check Point, Application Intelligence, Check Point Express, the Check Point logo, AlertAdvisor, ClusterXL, Cooperative Enforcement, ConnectControl, Connectra, CoSa, Cooperative Security Alliance, Eventia, Eventia Analyzer, Eventia Reporter, FireWall-1, FireWall-1 GX, FireWall-1 SecureServer, FloodGate-1, Hacker ID, IMsecure, INSPECT, INSPECT XL, Integrity, InterSpect, IQ Engine, Open Security Extension, OPSEC, Policy Lifecycle Management, Provider-1, Safe@Home, Safe@Office, SecureClient, SecureKnowledge, SecurePlatform, SecuRemote, SecureXL Turbocard, SecureServer, SecureUpdate, SecureXL, SiteManager-1, SmartCenter, SmartCenter Pro, Smarter Security, SmartDashboard, SmartDefense, SmartLSM, SmartMap, SmartUpdate, SmartView, SmartView Monitor, SmartView Reporter, SmartView Status, SmartViewTracker, SofaWare, SSL Network Extender, Stateful Clustering, TrueVector, Turbocard, UAM, User-to-Address Mapping, UserAuthority, VPN-1, VPN-1 Accelerator Card, VPN-1 Edge, VPN-1 Pro, VPN-1 SecureClient, VPN-1 SecuRemote, VPN-1 SecureServer, VPN-1 VSX, VPN-1 XL, Web Intelligence, ZoneAlarm, ZoneAlarm Pro, Zone Labs, and the Zone Labs logo, are trademarks or registered trademarks of Check Point Software Technologies Ltd. or its affiliates. All other product names mentioned herein are trademarks or registered trademarks of their respective owners. The products described in this document are protected by U.S. Patent No. 5,606,668, 5,835,726, 6,496,935, 6,873,988 and 6,850,943 and may be protected by other U.S. Patents, foreign patents, or pending applications.

May 12, 2005 P/N 501780

Worldwide Headquarters
3A Jabotinsky Street, 24th Floor
Ramat Gan 52520, Israel
Tel: 972-3-753-4555
Fax: 972-3-575-9256
Email: info@checkpoint.com

U.S. Headquarters
800 Bridge Parkway
Redwood City, CA 94065
Tel: 800-429-4391; 650-628-2000
Fax: 650-654-4233
www.checkpoint.com



Check Point®
SOFTWARE TECHNOLOGIES LTD.

We Secure the Internet.